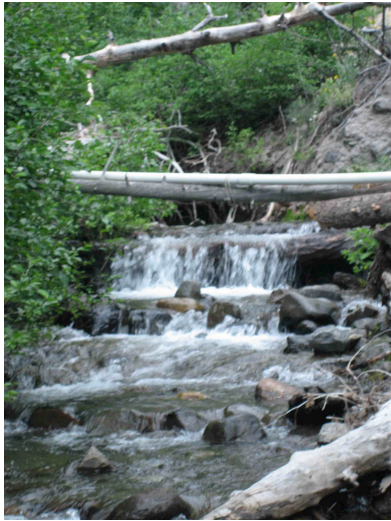


PHOTOS DEPICTING ALLUVIAL FAN REACH OF COLD STREAM. Notice numerous wetted channels (distributaries) apparent on aerial view (TOP LEFT)







TOP/BOTTOM LEFT highlights the role of log steps in pool formation and bedload retention in the high gradient reach. TOP RIGHT: Bedrock chute through reach 3. BOTTOM RIGHT: Landslides flanking channel in reach 3







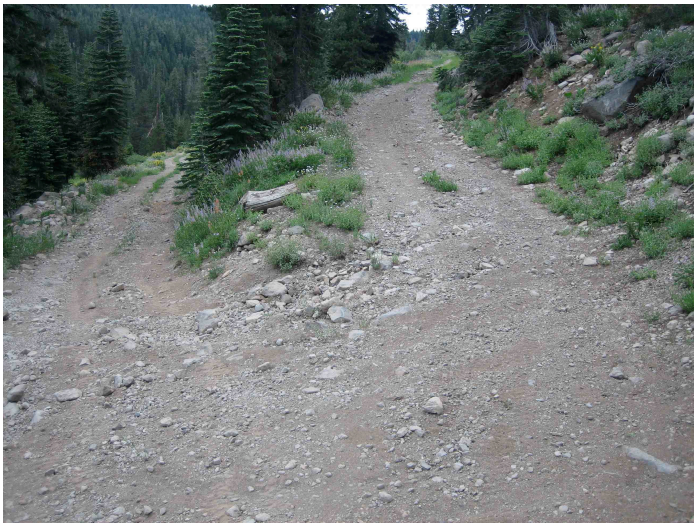
PHOTOS DEPICTING COLD STREAM MEADOW REACH



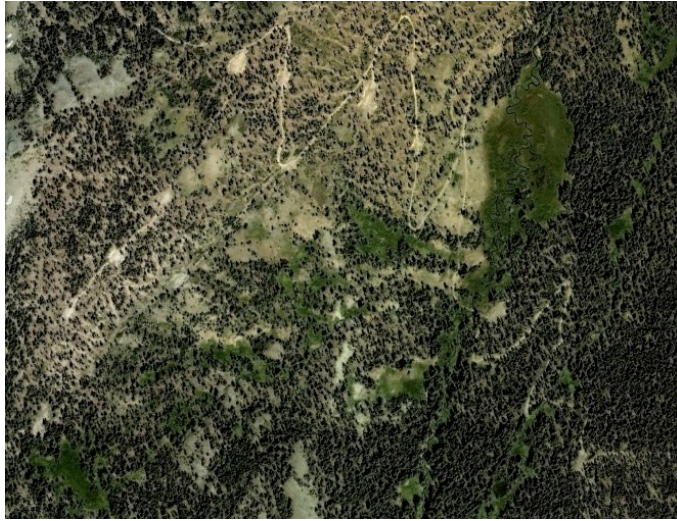




TOP ROW: Views of logged areas in Section 1, T16N, R14E. BOTTOM LEFT shows hard road surface resisting surface erosion from upslope. BOTTOM RIGHT shows a small drainage problem on spur road.







TOP LEFT is aerial view showing numerous springs in upper basin. TOP RIGHT shows accumulation of glacial drift in reach 4. BOTTOM LEFT: Granite "erratic" boulders. BOTTOM RIGHT: Volcanic outcrop with talus slope below

