

COORDINATED RESOURCE MANAGEMENT PLAN FOR THE FEATHER RIVER

INTRODUCTION:

The Feather River (FR) Coordinated Resource Management (CRM) Plan comprises the 2,062,080 acre geographical area upstream from the Middle Fork, South Fork and North Fork, Feather Rivers juncture with the Plumas-Butte County line as shown on attached map. This land is divided into the following ownership pattern:

National Forest	_____ Acres
Bureau of Land Management	_____ Acres
Industrial Timber	_____ Acres
Non-industrial Timber	_____ Acres
Agricultural	_____ Acres
Other Private	_____ Acres

GOALS & OBJECTIVES:

The CRM Plan objectives are to maintain, protect, and improve, where possible, water quality and quantity in the Feather River.

It will be the goal of this CRM Plan to optimize the beneficial uses of the waters of the Feather River. These beneficial uses are: domestic, municipal, agricultural, and industrial supply; power generation; recreation; aesthetic enjoyment; navigation; and preservation and enhancement of fish, wildlife, and other aquatic resources.

The CRM will emphasize education to prevent future water quality degradation of the Feather River. The CRM Group will cooperatively design and assist with funding for water quality improvement projects to abate water quality degradation in the Feather River.

ISSUES & CONCERNS:

The following issues and concerns were identified during the planning process.

Concerns

1. The public and regulatory agencies may confuse erosion *symptoms* with erosion *causes*. The result could be that the public and regulatory agencies would blame today's landowners for one hundred years of cumulative watershed damage.
2. Private lending institutions and public and private grant financing may not keep pace with the rising expectations of the public and regulatory agencies. Landowners could be faced with satisfying raised expectations with no additional resources.
3. Most of the available time, energy, and money will be spent on studies instead of getting work done "on the ground".
4. Consensus agreements forged by this CRM will be used to set precedents or standards that other landowners will be forced to meet without the benefit of this CRM's site specific, cooperative process.
5. Consensus agreements forged by this CRM will become "set in concrete" and later impair the CRM participants' ability to meet unforeseen changes cooperatively.
6. Without the Consensus Rule, the CRM could be used by agencies to regulate private land.
7. Without the Consensus Rule, the CRM could be used by special interests to stop logging and grazing on public lands.
8. Public or private landowners, upstream or downstream, will undo the CRM water quality improvements with poor resource management practices on their lands.
9. Funding agencies and organizations will require water quality solutions so risk-free that landowners will not be able to afford to implement them.

Issues

1. Excessive sedimentation to downstream reservoirs
2. Desertification of riparian, meadow, and range lands
3. Quality of irrigation return flows
4. Alteration of stream morphology
5. Lack of riparian vegetation and unstable streambeds and banks
6. Economic and community stability
7. Overgrazing
8. Degradation of fish and wildlife habitat
9. Walker Mine pollution
10. Landowner rights
11. Gravel extraction from streams
12. Environmental awareness
13. Implementation funds
14. Sufficient knowledge to implement correction measures
15. Access to private land
16. Improved agricultural production
17. Degradation of water quality
18. Loss of agricultural land
19. Recreation
20. Aesthetics

MEMORANDUM OF AGREEMENT (MOA):

The *Memorandum of Agreement* regarding a regional erosion control plan for the Feather River watershed, hereto attached as Appendix A, shall become a party of this CRM Plan. The MOA's purposes, objectives, and responsibilities shall become a part, but not necessarily a whole, of the purposes or objectives of this CRM Plan.

MEMORANDUM OF UNDERSTANDING (MOU):

The following MOU's shall be attached to this CRM Plan as references.

Appendix B. Memorandum of Understanding for Coordinated Resource Management as signed by:

Bureau of Land Management
U.S. Forest Service
Science and Education Administration Extension, as endorsed by the National Association of Conservation Districts

Appendix C. Memorandum of Understanding for Coordinated Resource Management in California as signed by:

Bureau of Land Management
Natural Resource Conservation Service (formerly Soil Conservation Service)
California Association of Conservation Districts
U.C. Cooperative Extension
Department of Conservation
Department of Forestry and Fire Protection
U.S.D.A. Forest Service, Region V
Department of Fish and Game
State Lands Commission
Agricultural Stabilization and Conservation Service
Department of Food and Agriculture
Department of Water Resources

CRM GROUND RULES FOR COORDINATION:

1. It makes sense to cooperate on accomplishing shared goals.
2. *No ONE of us is as smart as ALL of us.*
Sharing our different experiences is a powerful tool for problem solving. When we disagree, maybe we haven't analyzed the problem and all possible solutions thoroughly - not only from our point of view but from other points of view.
3. *Blaming someone else doesn't solve a problem.*
It is important to understand the past to understand our future possibilities. We are interested in *what happened* rather than *who did it*. Pointing fingers does not encourage cooperative win-win solutions to problems.
4. We need to ask the experts, but make our own decisions.
We need expert advice *plus* a lot of common sense to develop the best solutions for our particular situation.
5. Without consensus by all participants, even win-win solutions may never be implemented.
6. *Change is inevitable.*
The trust that comes with cooperative problem solving will encourage us to respond positively to future change.

CRM ROLES & MEMBERSHIP:

Executive Committee - provides central guidance, planning, and policies for the CRM; establishes financing, budgeting, and project ranking procedures, as well as project implementation oversight.

The Executive Committee will be made up of four members serving staggered two-year terms. Three members are appointed. The Feather River Resource Conservation District (FRRCD), the Plumas County Board of

Supervisors, and the Plumas National Forest each will appoint one person to the Executive Committee. These three Executive Committee members will appoint a member-at-large.

The Executive Committee will meet at least semi-annually.

Steering Committee - provides continuity to the Feather River CRM effort from project to project and from year to year; approves the conceptual plan for each project and refers the project to the Finance and Technical Review Subcommittees for design and funding development.

The Steering Committee will be made up of at least one person from each of the signatories of the MOA or their designated representatives, and representatives of interested organizations and community groups. The chairperson of this committee will be chosen annually by the Steering Committee members and take office on January 1.

The Steering Committee will meet at least semi-annually.

Finance Subcommittee - identifies possible funding sources for projects as well as aids in the preparation of funding applications where necessary.

The Finance Subcommittee will be made up of one member each from:

- Department of Fish and Game
- Department of Forestry and Fire Protection
- Department of Water Resources
- Feather River Resource Conservation District
- North Cal-Neva Resource Conservation and Development Area
- Pacific Gas and Electric Company
- Plumas Corporation
- Plumas County
- Natural Resource Conservation Service (formerly Soil Conservation Service)
- U.S.D.A. Forest Service

The chairperson of this subcommittee will be chosen annually by the subcommittee members.

The Finance Subcommittee will meet as needed.

Technical Review Subcommittees - interdisciplinary teams which provide specific expertise, field evaluation, and coordination; analyzes the information available; identifies and defines objectives and alternatives; arrives at recommendations which are acceptable to the CRM Executive Committee, the Steering Committee, and the participating landowners; prepares required environmental documentation for specific projects when necessary, including cumulative watershed effects analysis.

The chairpersons of these subcommittees will be appointed by the Steering Committee. Members for each subcommittee will be selected by the chairperson of that subcommittee as needed.

The Technical Review Subcommittees will meet as needed.

Feather River Resource Conservation District (FRRCD) Directors and Indian Valley, American Valley, Sierra Valley, Mohawk Valley and Meadow Valley Landowners - identify projects through local contacts. The Feather River RCD refers potential projects to the Steering Committee for technical assistance and funding, and oversees the implementation of projects approved by the Executive Committee in a timely manner, meeting project specifications within budget constraints.

Plumas Corporation - provides overall coordination of CRM Plan and Project Coordinator; provides general guidance during implementation of each project.

The Coordinator:

- (1) FUNCTIONS AS A CLEARINGHOUSE for griping, blaming, rumors, concerns about hidden motives or agendas, etc. The coordinator can air these issues anonymously so that they are "on the table" with minimum personal risk and repercussions to participants.
- (2) PREVENTS "GROUP THINK" by ensuring that new ideas and perspectives continue to challenge the group. "Birds of a feather" do not necessarily make the best decisions.
- (3) PREVENTS "GANG WARFARE" by preventing groups from ganging up on individuals or other groups who don't share their views. Ensures that all views on issues have an equal opportunity to be heard and evaluated.
- (4) ENSURES THAT THE GROUP IS PROVIDED WITH AS MANY OPTIONS AS POSSIBLE BEFORE A DECISION IS MADE. The more choices the group has, the more possible a win-win, cooperative solution becomes. The coordinator ensures that the group takes the time it needs to make a well informed decision.
- (5) COORDINATES LOGISTICS where the group determines that group efforts are more productive and desirable than individual efforts.

Signatories - The signers of the Feather River CRM Plan will be the same as the MOA signatories, except that each organization's signing representative will be an individual who is close to the operational level. At any time during the year, organizations representing local community and special interests may petition the Executive Committee to become signatories to the Feather River CRM Plan.

CRM ORGANIZATIONAL STRUCTURE (Figure 1):

In general, as the projects are identified and developed by the Feather River RCD, projects are referred to the Steering Committee for review and funding. During this review process, prospective projects are sent to the Technical Review Subcommittee for environmental and technical review and to the Finance Subcommittee for identification of funding sources.

If funding is available, environmental documents are prepared by the Technical Review Committee. Once the project has cleared both the Technical Review and Finance Subcommittees, it is sent back to the Steering Committee for final review. The Steering Committee forwards the project with its recommendations to the Executive Committee for final approval. The Executive Committee will notify the Feather River RCD and the Steering Committee that the project has been approved. It will be the Feather River RCD's assignment to implement the project as approved, with assistance from the Steering Committee and overall coordination being provided from Plumas Corporation.

On all levels of the project development process, decisions will be made by unanimous agreement or consensus. Projects failing to achieve consensus will be referred to the Steering Committee and the Feather River RCD for revision or deferral until unanimous agreement is reached on all issues and concerns associated with the project.

CRM PROJECTS AND PLANS:

The Feather River Erosion Control Plan timeline (Figure 2) is made a part of this CRM Plan. The Erosion Plan designates tasks to be accomplished and the planned timeline. Project plans are appended and become part of this CRM Plan, once approved by the Executive Committee.

ANNUAL REVIEW:

The CRM Plan will be reviewed by the Executive Committee annually. It is understood that the CRM Plan document may be amended as necessary to reflect changes in CRM priorities or to add projects or cooperators. These amendments will be done by mutual consent of all parties involved.

SIGNATURES:

In witness whereof, the parties hereto, by their respective duly authorized officials, have executed this agreement as of the 8th day of February, 1996.

Agricultural Stabilization and Conservation Service

By _____

California Department of Fish and Game

By _____

California Department of Forestry and Fire Protection

By _____

California Department of Parks and Recreation

By _____

California Department of Transportation

By _____

California Department of Water Resources

By _____

California Regional Water Quality Control Board, Central Valley Region

By _____

Feather River College

By _____

SIGNATURES:

In witness whereof, the parties hereto, by their respective duly authorized officials, have executed this agreement as of the ____ day of _____, 19____.

Agricultural Stabilization and Conservation Service

By _____

California Department of Fish and Game

By _____

California Department of Forestry and Fire Protection

By _____

California Department of Parks and Recreation

By _____

California Department of Transportation

By _____

California Department of Water Resources

By _____

California Regional Water Quality Control Board, Central Valley Region

By _____

Feather River College

By  _____

Feather River Resource Conservation District

By _____

North Cal-Neva Resource Conservation and Development Area

By _____

Pacific Gas and Electric Company

X By Jeffrey D Butts

Plumas Corporation

By _____

Plumas County

By _____

Plumas County Community Development Commission

By _____

Plumas Unified School District

By _____

U.S.D.A. Forest Service, Plumas National Forest

By _____

SIGNATURES:

In witness whereof, the parties hereto, by their respective duly authorized officials, have executed this agreement as of the ____ day of _____, 19____.

Agricultural Stabilization and Conservation Service

By _____

California Department of Fish and Game

By *[Signature]*, Regional Manager *shd/ac*

California Department of Forestry and Fire Protection

By _____

California Department of Parks and Recreation

By _____

California Department of Transportation

By _____

California Department of Water Resources

By _____

California Regional Water Quality Control Board, Central Valley Region

By _____

Feather River College

By _____

SIGNATURES:

In witness whereof, the parties hereto, by their respective duly authorized officials, have executed this agreement as of the ____ day of _____, 19____.

Agricultural Stabilization and Conservation Service

By _____

California Department of Fish and Game

By _____

California Department of Forestry and Fire Protection

By _____

California Department of Parks and Recreation

X By RGM acomber _____

California Department of Transportation

By _____

California Department of Water Resources

By _____

California Regional Water Quality Control Board, Central Valley Region

By _____

Feather River College

By _____

SIGNATURES:

In witness whereof, the parties hereto, by their respective duly authorized officials, have executed this agreement as of the ____ day of _____, 19____.

Agricultural Stabilization and Conservation Service

By _____

California Department of Fish and Game

By _____

California Department of Forestry and Fire Protection

By _____

California Department of Parks and Recreation

By _____

California Department of Transportation

By _____

California Department of Water Resources

By _____

California Regional Water Quality Control Board, Central Valley Region

X By  _____

Feather River Resource Conservation District

By _____

SIGNATURES:

In witness whereof, the parties hereto, by their respective duly authorized officials, have executed this agreement as of the ____ day of _____, 19 ____.

Agricultural Stabilization and Conservation Service

By _____

California Department of Fish and Game

By _____

California Department of Forestry and Fire Protection

✓ By Robert E. Taylor

California Department of Parks and Recreation

By _____

California Department of Transportation

By _____

California Department of Water Resources

By _____

California Regional Water Quality Control Board, Central Valley Region

By _____

Feather River College

By _____

SIGNATURES:

In witness whereof, the parties hereto, by their respective duly authorized officials, have executed this agreement as of the ____ day of _____, 19____.

Agricultural Stabilization and Conservation Service

By _____

California Department of Fish and Game

By _____

California Department of Forestry and Fire Protection

By _____

California Department of Parks and Recreation

By _____

California Department of Transportation

By _____

California Department of Water Resources

By William J. Bennett

California Regional Water Quality Control Board, Central Valley Region

By _____

Feather River College

By _____

Feather River Resource Conservation District

X By Nelson R. Garneau

North Cal-Neva Resource Conservation and Development Area

By _____

Pacific Gas and Electric Company

By _____

Plumas Corporation

By _____

Plumas County

By _____

Plumas County Community Development Commission

By _____

Plumas Unified School District

By _____

U.S.D.A. Forest Service, Plumas National Forest

By _____

Feather River Resource Conservation District

By _____

North Cal-Neva Resource Conservation and Development Area

By _____

Pacific Gas and Electric Company

By _____

Plumas Corporation

By _____

Plumas County

By _____

Plumas County Community Development Commission

By  _____

Plumas Unified School District

By _____

U.S.D.A. Forest Service, Plumas National Forest

By _____

Feather River Resource Conservation District

By _____

North Cal-Neva Resource Conservation and Development Area

By _____

Pacific Gas and Electric Company

By _____

Plumas Corporation

By _____

Plumas County

By Robert H. Mendenhall

Plumas County Community Development Commission

By _____

Plumas Unified School District

By Robert H. Mendenhall

U.S.D.A. Forest Service, Plumas National Forest

By _____

Feather River Resource Conservation District

By _____

North Cal-Neva Resource Conservation and Development Area

By Jan Dybbahl, Project Coordinator

Pacific Gas and Electric Company

By _____

Plumas Corporation

By _____

Plumas County

By _____

Plumas County Community Development Commission

By _____

Plumas Unified School District

By _____

U.S.D.A. Forest Service, Plumas National Forest

By _____

U.S.D.A. Natural Resource Conservation Service

By _____

U.S. Army Corps of Engineers

By _____

U.S. Fish and Wildlife Service

x By Joel A. Medina

University of California Cooperative Extension

By _____

U.S.D.A. Natural Resource Conservation Service

By _____

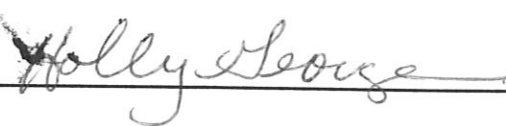
U.S. Army Corps of Engineers

By _____

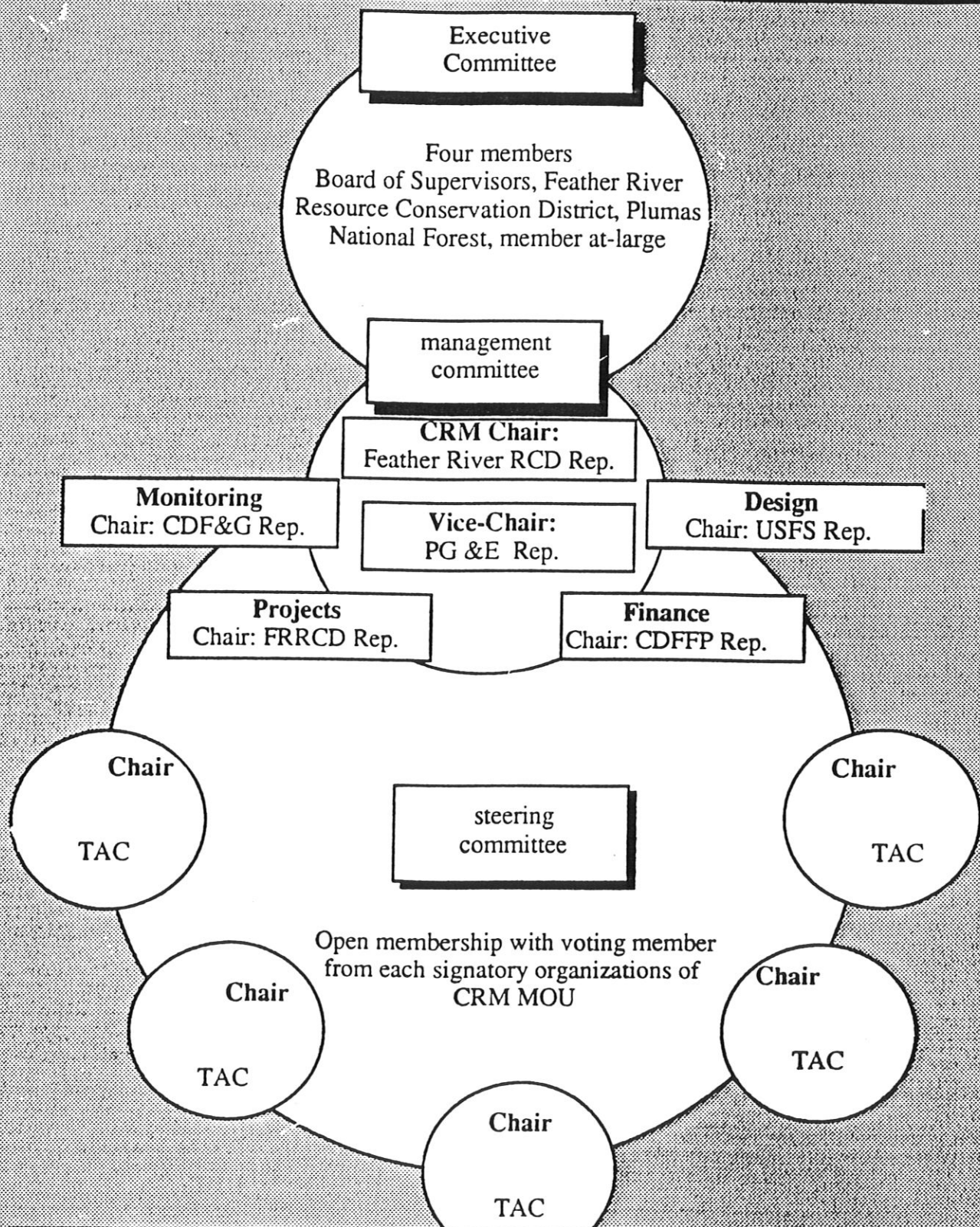
U.S. Fish and Wildlife Service

By _____

University of California Cooperative Extension

By  _____

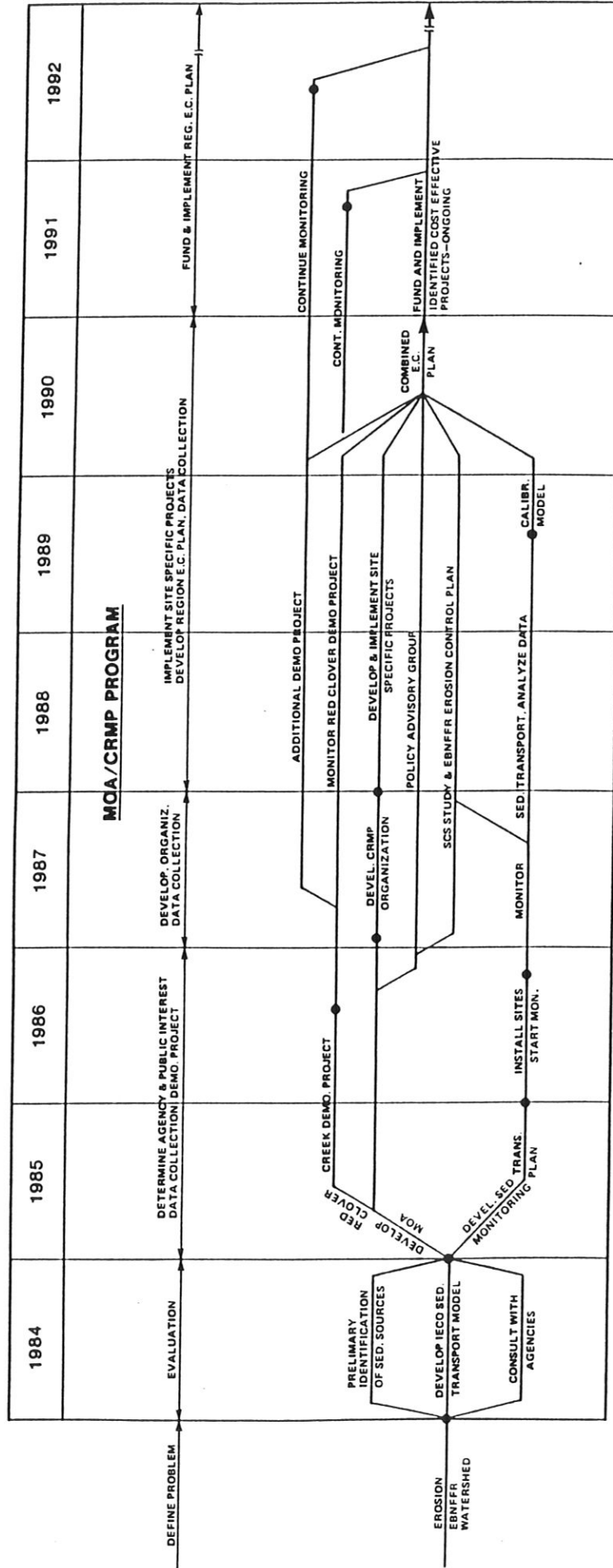
Feather River Coordinated Resource Management (CRM)



TAC: Technical Assistance Committees for projects & studies
CDF&G: California Dept. of Fish and Game
USFS: United States Forest Service
CDFFP: Calif. Dept. of Forestry & Fire Protection
FRRCD: Feather River Resource Conservation District

October 1994

EAST BRANCH NF FEATHER RIVER EROSION CONTROL PLAN



MOA - CRMP PARTICIPANTS

- AGRICULTURAL STABILIZATION AND CONSERVATION SERVICE
- CALIFORNIA DEPARTMENT OF FISH AND GAME
- CALIFORNIA DEPARTMENT OF FORESTRY
- CALIFORNIA DEPARTMENT OF TRANSPORTATION
- CALIFORNIA DEPARTMENT OF WATER RESOURCES
- CALIFORNIA REGIONAL WATER QUALITY CONTROL BOARD
- INDIAN-AMERICAN VALLEY RESOURCE CONSERVATION DISTRICT
- PACIFIC GAS AND ELECTRIC COMPANY
- PLUMAS CORPORATION
- PLUMAS COUNTY
- PLUMAS NATIONAL FOREST
- SOIL CONSERVATION SERVICE
- U.S. ARMY CORPS OF ENGINEERS
- U.S. FISH AND WILDLIFE SERVICE
- RANCHERS
- LOCAL ORGANIZATIONS
- INDIVIDUALS
- PROPERTY MANAGERS

BENEFITS OF RESTORED WATERSHED

- IMPROVED:
- WATER QUALITY
- FISHERY
- FORAGE
- RIPARIAN ZONE
- LAND VALUE
- RECREATION
- AESTHETICS
- WATER YIELD
- FLOOD CONTROL
- SEDIMENT CONTROL
- WILDLIFE