



For more information on how you can shape the future of the Upper Feather River Integrated Regional Water Management Plan, please visit the website:

<http://featherriver.org>

or contact:

Uma Hinman Consulting
Ms. Uma Hinman
 UFR.contact@gmail.com
 (916) 813-0818

Proposition 84 Grantee:
Plumas County Flood Control and Water Conservation District



What is an Integrated Regional Water Management Plan?

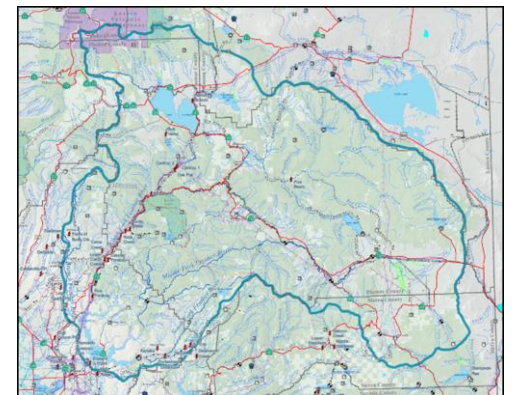
An IRWM Plan is a comprehensive, non-regulatory planning document prepared on a region-wide scale that identifies priority water resources projects and programs with multiple benefits.

An IRWM Plan relies upon specific and focused local and sub-regional planning efforts for its foundation, and investigates a broad spectrum of water resources issues including water supply, flood management, water quality, environmental restoration, environmental justice, stakeholder involvement and far-reaching community and statewide interests.

A key difference in IRWM Plan (as compared to other planning documents) is that IRWM Plans integrate multiple water management strategies to solve multiple priority challenges. IRWM Plans can help attract state and other funding to fund regional projects.

Upper Feather River IRWM Plan

Integrated Regional Water Management Plan Update



Overview 2015



Integrated Regional Water Management

Benefits of IRWM Plans

Integrated Regional Water Management is a key initiative to ensuring reliable water supplies in the future. IRWM Plans help communities and regions incorporate sustainable actions into their water management efforts.

A main focus of IRWM is diversification of a region's water portfolio so that multiple resource management strategies are employed in meeting future water and water quality needs of all sectors. This diversification should help regions be better prepared to face an uncertain future of water availability and water use, while protecting and improving water quality and the environment

IRWM is a long term approach to water management in California. As IRWM evolves it seeks to encourage planning efforts that are collaborative and use broad stakeholder participation to gain the input that leads to diversity of water management strategies. Such planning efforts can live well into the future and beyond current state funding incentives.

Mission Statement

To effectively perpetuate local control and regional collaboration to provide stability and consistency in the planning, management and coordination of resources within the Upper Feather River watershed. To implement an integrated strategy that guides the Upper Feather River region toward protecting, managing and developing reliable and sustainable water resources.

Upper Feather River Regional Water Management Group

The RWMG is the decision-making body of the Upper Feather River IRWM Program. The RWMG consists of seven local agencies, a Tribal representative, a member of the public, and representatives of three national forests (Plumas, Lassen, Tahoe) who serve in an advisory role. The RWMG oversees the development of IRWM Plan, which includes stakeholder and disadvantaged community involvement and overall plan development and management.

Meeting times and locations are posted on the IRWM website
<http://featherriver.org/meetings>

How You Can Participate

IRWM operates on the principle that each stakeholder holds a piece of the water management solution for their region and that the best solutions require increased communication and understanding of regional issues. The more partners involved in an IRWM Plan, the higher the potential for better water management solutions.

IRWM Plan meetings and workshops are a forum for stakeholders to participate in constructing a Plan to fit changing regional water management needs within the Upper Feather River Watershed.

Stakeholders and the public are encouraged to become involved in the Workgroups. The Workgroups will provide input on project development, resource management strategies, and draft Plan chapters. More information is located on the Upper Feather River IRWM website: <http://featherriver.org/workgroups>.

Workgroups

Uplands and Forest Management:

[Leah Wills, UFR.uplands@gmail.com](mailto:Leah.Wills@ufr.org)

Meadows, Floodplains and Waterbodies Management:

[Terri Rust, UFR.meadows@gmail.com](mailto:Terri.Rust@ufr.org)

Agricultural Lands Stewardship:

[Kristi Jamason, UFR.agriculture@gmail.com](mailto:Kristi.Jamason@ufr.org)

Municipal Services:

[Uma Hinman, UFR.municipal@gmail.com](mailto:Uma.Hinman@ufr.org)

Tribal Advisory Committee:

[Trina Cunningham, UFR.tribal@gmail.com](mailto:Trina.Cunningham@ufr.org)