

**Upper Feather River
Integrated Regional Water Management
Plan**

Tribal Engagement Plan

2016

Upper Feather River IRWM Tribal Engagement Plan

The purpose of the Upper Feather River IRWM Tribal Engagement Plan (TEP) is to encourage active Tribal participation in the Upper Feather River Regional Water Management Group including the bi-monthly Upper Feather River Regional Water Monitoring Group meetings, to integrate Tribal concerns throughout the IRWM Plan update processes, to identify needs of Tribes and to encourage the receipt of Integrated Regional Water Monitoring (IRWM) funds by regional Tribes to address water and watershed related needs.

Outreach and engagement of Tribes in the Upper Feather River will be completed to promote Tribal participation in:

- Quarterly Regional Water Monitoring Group meetings
- RWMG Workgroups
- Upper Feather River (IRWM) Plan Update
- Submission of projects for consideration by the RWMG

Our goal is that Upper Feather River Tribes will assist regional agencies and stakeholders in developing and implementing Regional Water Management strategies and projects. Through this program we anticipate that Tribes will receive IRWM funds to address Tribal water issues.

Tribal Outreach is summarized in the UFR SIP Plan as follows.

TRIBAL OUTREACH

Tribal outreach will be led by the California Indian Environmental Alliance (CIEA), including a local Tribal member as the outreach coordinator. The local Tribal member is the designated representative for the Maidu Summit Consortium, a UFR IRWM MOU signatory entity. A Tribal Engagement Plan (TEP) has been prepared and is a living document revised by Upper Feather River Tribes. The TEP will guide the outreach efforts such that the UFR region Tribes have greater accessibility to the various layers of the governance structure such as the workgroups, and inter-regional outreach activities, as well as ensuring active Tribal participation in the bi-monthly RWMG meetings throughout the two-year planning process. During the UFR IRWM Plan update process, Tribes will be surveyed regarding their water issues and needs.

❖ TRIBAL ENGAGEMENT PLAN DEVELOPMENT AND UPDATES

Much like the related Upper Feather River Stakeholder Involvement Plan (SIP) the TEP is a “living” document that can be adapted and refined as needed by Upper Feather River Tribal representatives and Tribal groups. The TEP was developed in 2015 and may be subsequently updated by the Tribal Advisory Committee (TAC) and submitted to the RWMG Coordinator to complement the SIP.

❖ UFR TRIBAL PARTICIPATION

There are several ways that Tribes in the Upper Feather River can actively participate in the Upper Feather River Integrated Regional Water Management Group including:

- Participation in the RWMG Workgroups
- Advising the Native American Representative who votes as part of the RWMG
- Through participation in Tribal Advisory Committee Meetings, which serve to inform Tribes, coordinate Tribal engagement activities and to advise the Native American Representative prior to RWMG Meetings.

- Through communication and/or Consultation with Upper Feather River participating Counties.
- Through comment at the Quarterly RWMG Meetings during public comment period(s).

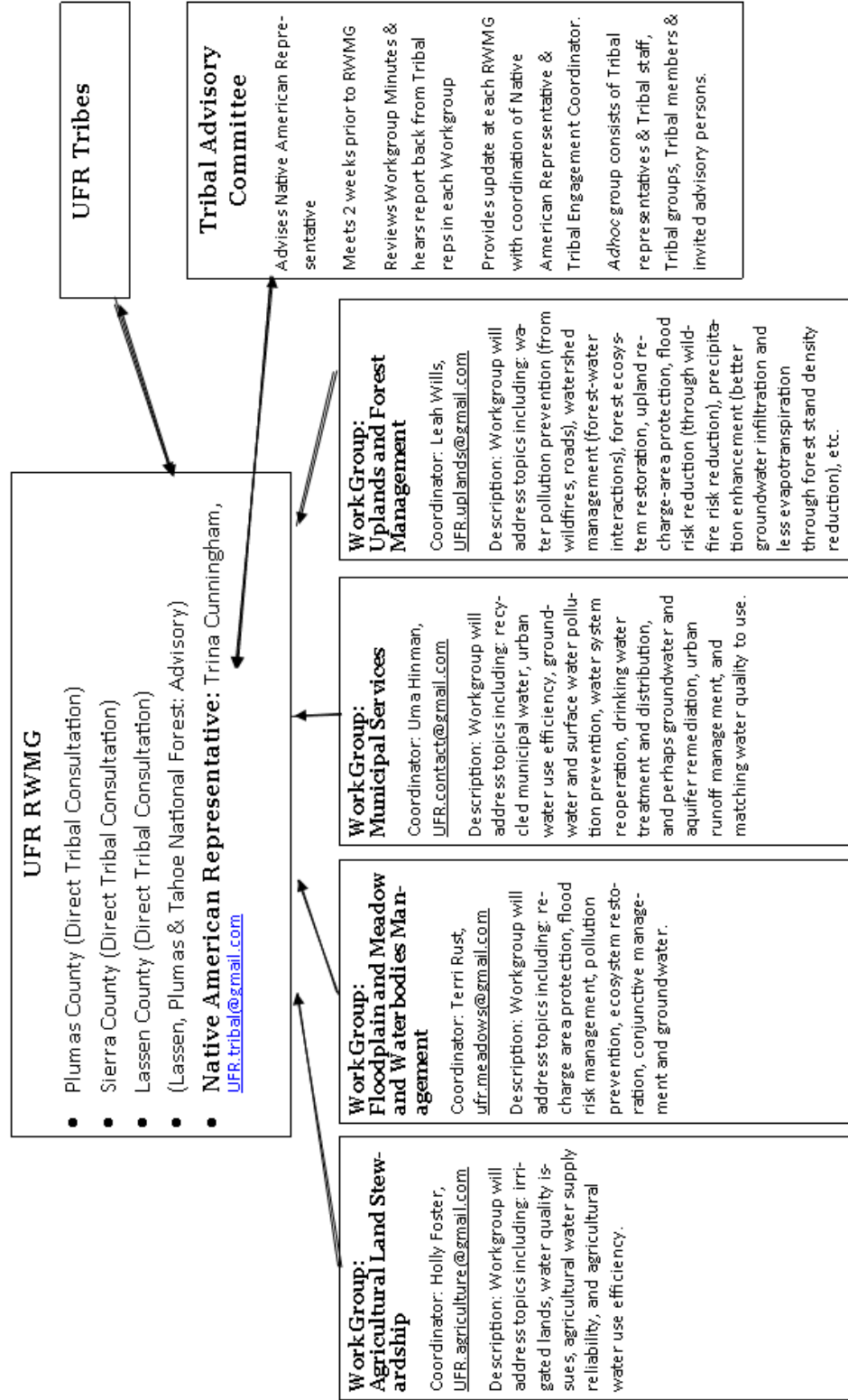
To participate in the RWMG Workgroups and to provide comments during the Quarterly RWMG Meetings, outside of the public comment period and outside of advise previously provided to the Native American Representative, Tribes must be signatory to the MOU and once completed, to the IRWM Plan. Tribes in the Upper Feather River are encouraged to participate in this way.

Note that any UFR Tribe, whether signatory or not may advise the Native American Representative seated on the RWMG by phone, email or during TAC calls, workgroup meetings and/or at the RWMG bi-monthly meetings. Please provide the Representative a weeks-notice prior to the RWMG bi-monthly meeting if you would like information formally to be provided to the RWMG.

Conflicting information will be reviewed by the TAC during regularly scheduled TAC Meetings and a decision will be made by consensus. All guidance by regional Tribes will be considered.

A

Upper Feather River IRWM Tribal Engagement Structure



Note: RWMG & Workgroup Meeting Dates are posted on the UFR IRWM Website at: <http://fe.atheriver.org/>

❖ TRIBAL OUTREACH, ENGAGEMENT & INTEGRATION WITH THE RWMG COORDINATOR

The following is to be completed by the Native American Representative and a Tribal Engagement Coordinator:

- Contact Tribal Council leadership and environmental directors of the traditional Tribes of the Upper Feather by email and through follow-up by phone in order to increase participation in the UFR RWMG and to identify Tribal water concerns and integrate these concerns into the IRWM Plan.
- Those Tribes who are signatory to the MOU will be contacted to assist in facilitating the process of creation of the TEP, related RWMG documents and to encourage participation at Quarterly RWMG meetings.
- “The Native American Representative and/or an identified Tribal engagement coordinator are to attend up to two (2) follow-up meetings with Maidu Tribal council leadership and as necessary follow-up meetings to discuss Tribal issues and concerns, and to identify opportunities to improve conditions for the Tribe. The meetings will also be used to assist Tribal council leadership in developing updates and projects for inclusion in the IRWM Plan” and for funding submission.
- The Native American Representative and/or Tribal engagement coordinator will assist Tribal council leadership and/or council designated Tribal environmental staff to respond to the Call for Projects for inclusion in the IRWM Plan and encourage participation in the “Call for Projects” public hearings.
- Tribal council leadership through their environmental programs staff must receive sufficient notice to develop Tribal Projects for inclusion in the Plan. “It is expected that project development will include activities such as identifying action items to implement proposed projects.”
- The Native American Representative and/or the Tribal engagement coordinator will maintain a list of Tribal contacts, the list of Tribal water management issues, concerns, needs, and priority actions and Projects that will be included in the Plan, as well as meeting sign-up sheets, meeting summaries and Tribal trainings and workshops information.
- The Tribal engagement coordinator and the Native American Representative with assistance of MOU signatory Tribes will create a questionnaire for distribution to Upper Feather River Tribes to facilitate the gathering of Tribal water management issues, concerns, needs, priority actions and Projects that will be included in the Plan and needed Tribal Trainings. See appendix I for this [draft] questionnaire.

❖ **Interregional Communication**

While interregional communication between Tribes will be beneficial to the Upper Feather River Tribes and the RWMG, we do not expect interregional Tribes to make decisions about others' homelands. We do intend to recognize downstream users and respect and the trade agreements made between Tribes.

❖ **Memorandum of Understanding**

The Upper Feather River IRWM MOU was approved by the RWMG at their regular meeting held on November 14, 2014. The responsibilities and benefits of signatory parties can be found in the MOU (Stakeholder Involvement Plan, Appendix A). This document can be amended by a majority vote of the RWMG.

The following Tribes and Tribal entities are signatories to the original MOU:

- Greenville Rancheria
- Susanville Rancheria
- Maidu Summit Consortium

All signatories to the MOU will be asked to adopt the Plan upon completion, therefore, the Tribal Engagement Plan includes Tribal participation in the Plan update.

❖ **Decision Making Process**

The RWMG includes one voting Native American Representative. This representative is guided through direct contact by Upper Feather River Tribes and through consensus decisions made by the Tribal Advisory Committee during a minimum of one annual in person meeting, other meetings as needed and during bi-monthly phone calls coordinated prior to the bi-monthly RWMG meeting.

The Regional Water Management Group includes one seat for a Native American Representative, which is appointed by the Maidu Summit Consortium, in collaboration with Greenville Rancheria and Susanville Rancheria. An alternate Native American Representative may be designated to ensure consistent Tribal participation.

The role of the RWMG includes making decisions on

- Governance
- Finance
- Stakeholder Involvement/DACs
- Relation to Land Use Planning
- Relation to Local Water Planning
- Baseline Technical Study
- Project Selection/Ranking
- Plan Performance and Monitoring
- IRWM Chapter Preparation & Approve of Final Plan Chapters]

❖ **Workgroups**

In order for all Upper Feather River Tribes and Tribal groups to participate in the TAC, the TAC is an *adhoc* group and does not function as a Workgroup. Tribes are not required to be a signatory to the MOU to participate in the TAC. However, the TAC does provide information to the RWMG and is the mechanism to complete the consensus work of the Tribal Engagement Coordinator.

The TAC will provide the Native American Representative and Tribal Engagement Coordinator with direction on the following tasks generally completed by UFR Workgroups:

- Provide input on project selection and prioritization criteria
- Decision-making by members on proposed projects, draft chapters review, etc. by consensus before being forwarded to the RWMG
- Integration/coordination workshop each year for all the Workgroups to meet and receive updates and coordinate on respective efforts
- IRWMP Regional Descriptions, Objectives & Review of Draft Plan
- Data Management
- Impacts and Benefits
- Resource Management Strategies

❖ **Summary of Meetings**

The Tribal Engagement Coordinator will coordinate, facilitate and provide a report to the RWMG of meeting outcomes. The Native American Representative or the Tribal Engagement Coordinator can provide this during RWMG bi-monthly meetings or prior to the meeting in time to be included in RWMG meeting materials through the RWMG Coordinator.

❖ **Contact Information**

Native American Representative

Trina Cunningham, UFR.tribal@gmail.com, (530) 258-2299

Native American Representative Alternate

Lorena Gorbet, lgorbet@hotmail.com

Tribal Engagement Coordinator

California Indian Environmental Alliance (CIEA), sherri@cieaweb.org, (510) 848-2043